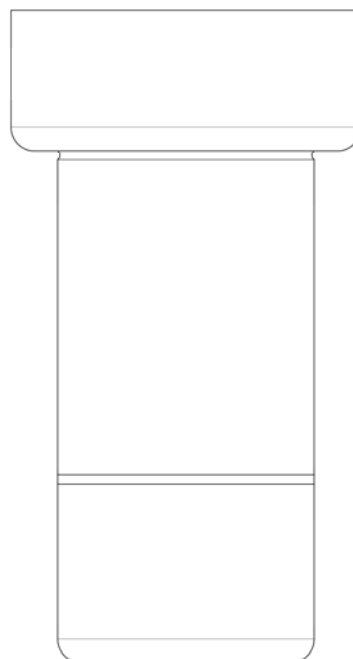


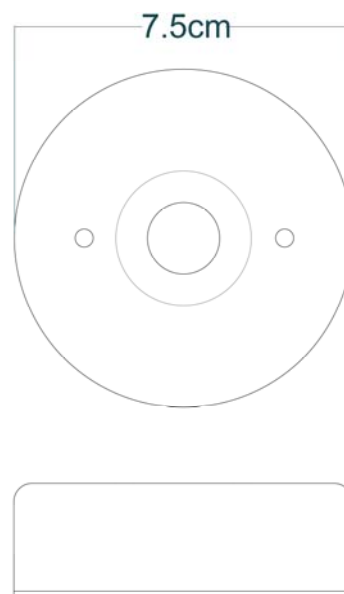
ENNIS Bathroom Light

MLBCF010ANTBRS Antique Brass



MATERIAL	Brass Glass
HEIGHT	14cm 5.51"
WIDTH DIAMETER	7.5cm 2.95"
LENGTH PROJECTION	n/a
WEIGHT	1kg 2.2lb
LAMPHOLDER	GU10
MAX WATTAGE	5W
VOLTAGE	220/240v
IP RATING	IP65
CLASS PROTECTION	1
SHADE	-
FLEX BAR CHAIN LENGTH	n/a
CABLE TYPE	-

FIXING BRACKET MLWB13 | Antique Brass



www.mullanlighting.com

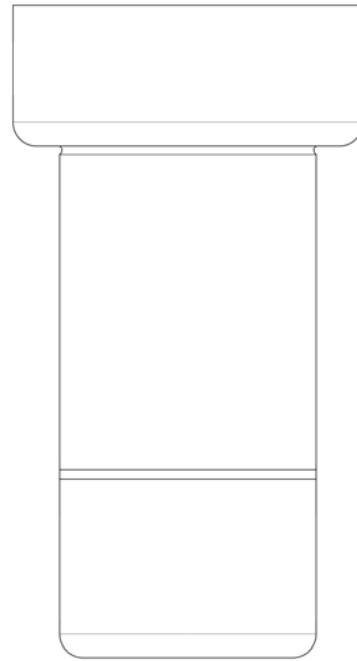
Product Notes:

1) Lamps not included with light fixture. 2) All products are individually hand crafted, therefore may differ slightly within manufacturing tolerances. 3) Please refer to: <http://www.mullanlighting.com/terms> for full list of Terms & Conditions. 4) Cable/Chain can be shortened during installation. 5) Longer Cable/Chain available on request. 6) Additional colour finishes available on request. 7.) Dimensions do not include lamps. 8.) Products wired to UL standards will operate at 110/120v with the appropriate lampholders.



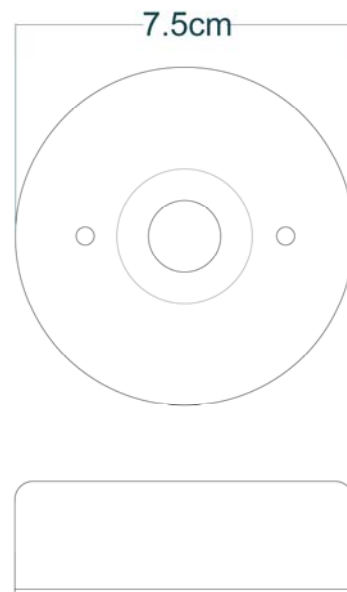
ENNIS Bathroom Light

MLBCF010ANTSLV Antique Silver



MATERIAL	Brass Glass
HEIGHT	14cm 5.51"
WIDTH DIAMETER	7.5cm 2.95"
LENGTH PROJECTION	n/a
WEIGHT	1kg 2.2lb
LAMPHOLDER	GU10
MAX WATTAGE	5W
VOLTAGE	220/240v
IP RATING	IP65
CLASS PROTECTION	1
SHADE	-
FLEX BAR CHAIN LENGTH	n/a
CABLE TYPE	-

FIXING BRACKET MLWB13 | Antique Silver



www.mullanlighting.com

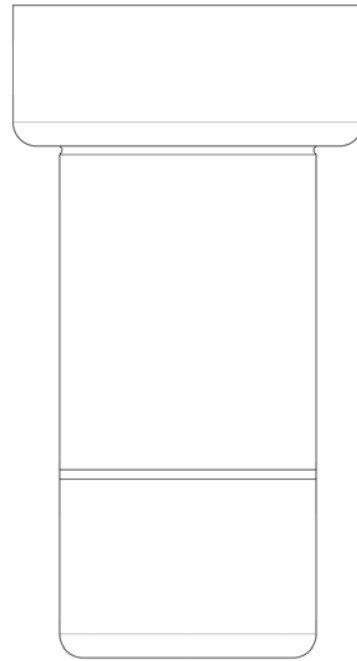
Product Notes:

1) Lamps not included with light fixture. 2) All products are individually hand crafted, therefore may differ slightly within manufacturing tolerances. 3) Please refer to: <http://www.mullanlighting.com/terms> for full list of Terms & Conditions. 4) Cable/Chain can be shortened during installation. 5) Longer Cable/Chain available on request. 6) Additional colour finishes available on request. 7.) Dimensions do not include lamps. 8.) Products wired to UL standards will operate at 110/120v with the appropriate lampholders.



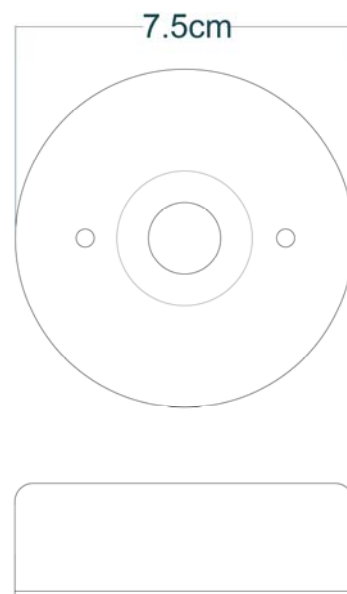
ENNIS Bathroom Light

MLBCF010NATBRS Natural Brass



MATERIAL	Brass Glass
HEIGHT	14cm 5.51"
WIDTH DIAMETER	7.5cm 2.95"
LENGTH PROJECTION	n/a
WEIGHT	1kg 2.2lb
LAMPHOLDER	GU10
MAX WATTAGE	5W
VOLTAGE	220/240v
IP RATING	IP65
CLASS PROTECTION	1
SHADE	-
FLEX BAR CHAIN LENGTH	n/a
CABLE TYPE	-

FIXING BRACKET MLWB13 | Natural Brass



www.mullanlighting.com

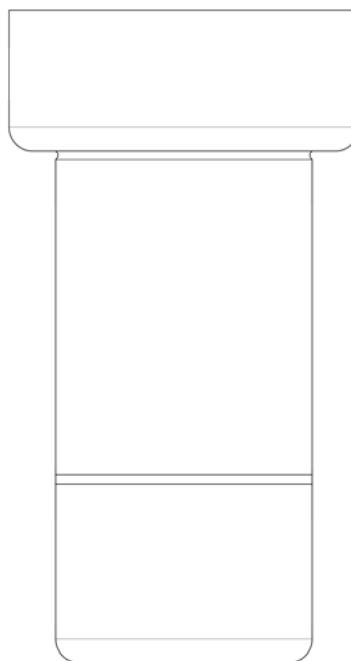
Product Notes:

1) Lamps not included with light fixture. 2) All products are individually hand crafted, therefore may differ slightly within manufacturing tolerances. 3) Please refer to: <http://www.mullanlighting.com/terms> for full list of Terms & Conditions. 4) Cable/Chain can be shortened during installation. 5) Longer Cable/Chain available on request. 6) Additional colour finishes available on request. 7.) Dimensions do not include lamps. 8.) Products wired to UL standards will operate at 110/120v with the appropriate lampholders.



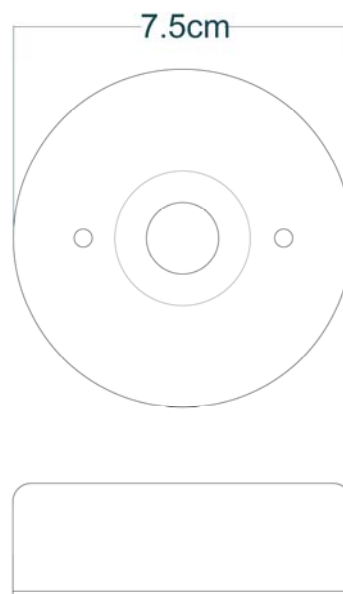
ENNIS Bathroom Light

MLBCF010POLBRS Polished Brass



MATERIAL	Brass Glass
HEIGHT	14cm 5.51"
WIDTH DIAMETER	7.5cm 2.95"
LENGTH PROJECTION	n/a
WEIGHT	1kg 2.2lb
LAMPHOLDER	GU10
MAX WATTAGE	5W
VOLTAGE	220/240v
IP RATING	IP65
CLASS PROTECTION	1
SHADE	-
FLEX BAR CHAIN LENGTH	n/a
CABLE TYPE	-

FIXING BRACKET MLWB13 | Polished Brass



www.mullanlighting.com

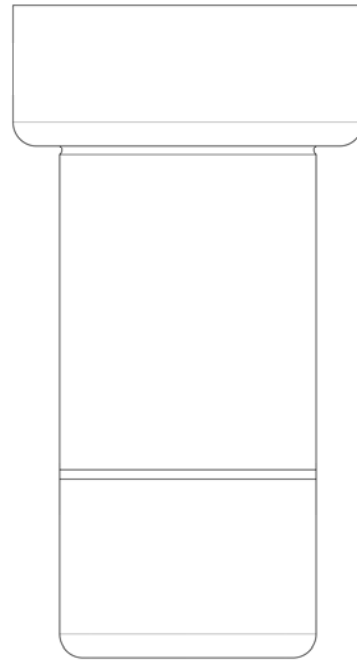
Product Notes:

1) Lamps not included with light fixture. 2) All products are individually hand crafted, therefore may differ slightly within manufacturing tolerances. 3) Please refer to: <http://www.mullanlighting.com/terms> for full list of Terms & Conditions. 4) Cable/Chain can be shortened during installation. 5) Longer Cable/Chain available on request. 6) Additional colour finishes available on request. 7.) Dimensions do not include lamps. 8.) Products wired to UL standards will operate at 110/120v with the appropriate lampholders.



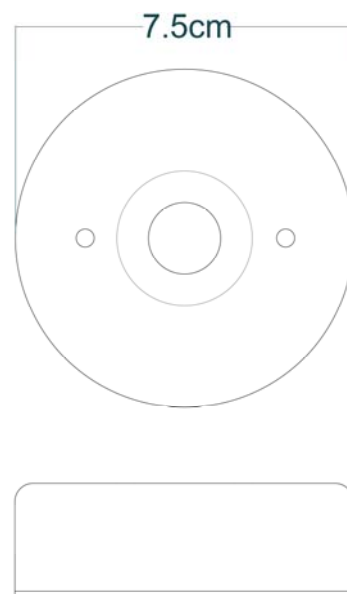
ENNIS Bathroom Light

MLBCF010SATBRS Satin Brass



MATERIAL	Brass Glass
HEIGHT	14cm 5.51"
WIDTH DIAMETER	7.5cm 2.95"
LENGTH PROJECTION	n/a
WEIGHT	1kg 2.2lb
LAMPHOLDER	GU10
MAX WATTAGE	5W
VOLTAGE	220/240v
IP RATING	IP65
CLASS PROTECTION	1
SHADE	-
FLEX BAR CHAIN LENGTH	n/a
CABLE TYPE	-

FIXING BRACKET MLWB13 | Satin Brass



www.mullanlighting.com

Product Notes:

1) Lamps not included with light fixture. 2) All products are individually hand crafted, therefore may differ slightly within manufacturing tolerances. 3) Please refer to: <http://www.mullanlighting.com/terms> for full list of Terms & Conditions. 4) Cable/Chain can be shortened during installation. 5) Longer Cable/Chain available on request. 6) Additional colour finishes available on request. 7.) Dimensions do not include lamps. 8.) Products wired to UL standards will operate at 110/120v with the appropriate lampholders.

